

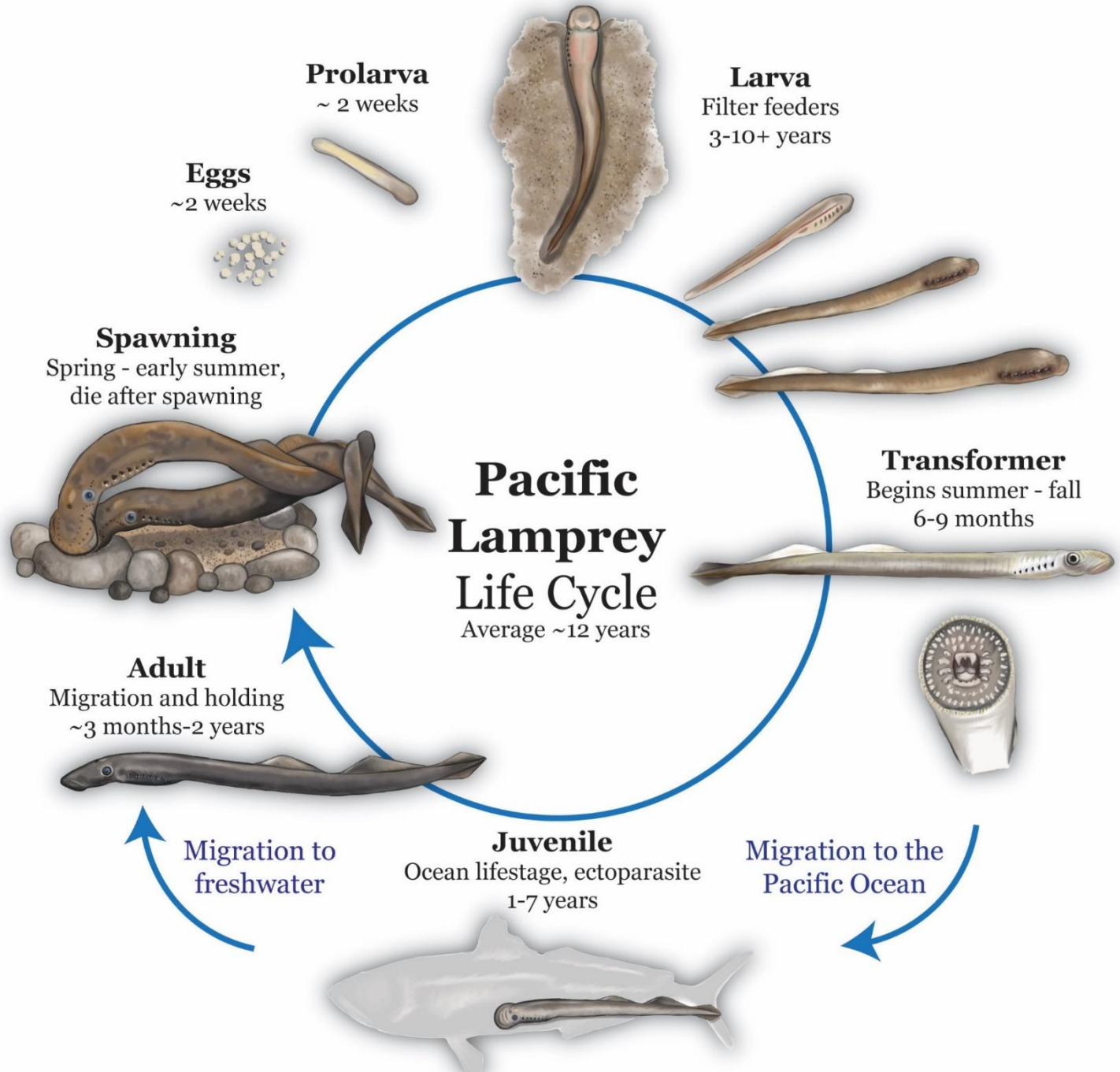
Status of Pacific Lamprey in the Upper Columbia Region



**John Crandall - Methow Salmon Recovery Foundation
Yakama Nation Fisheries - Pacific Lamprey Project
Confederated Tribes of the Colville Reservation
U.S. Fish and Wildlife Service
Washington Department of Fish and Wildlife**

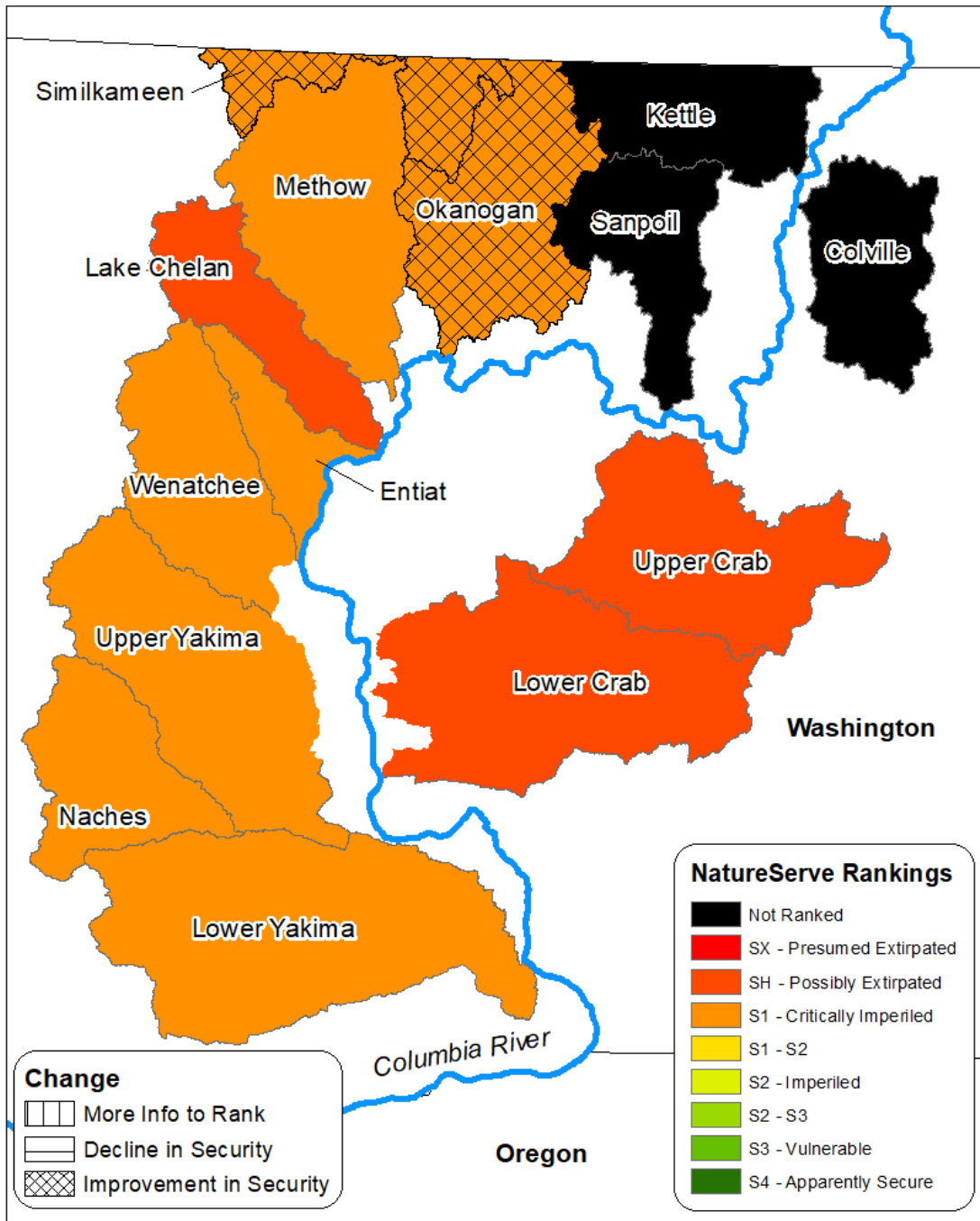




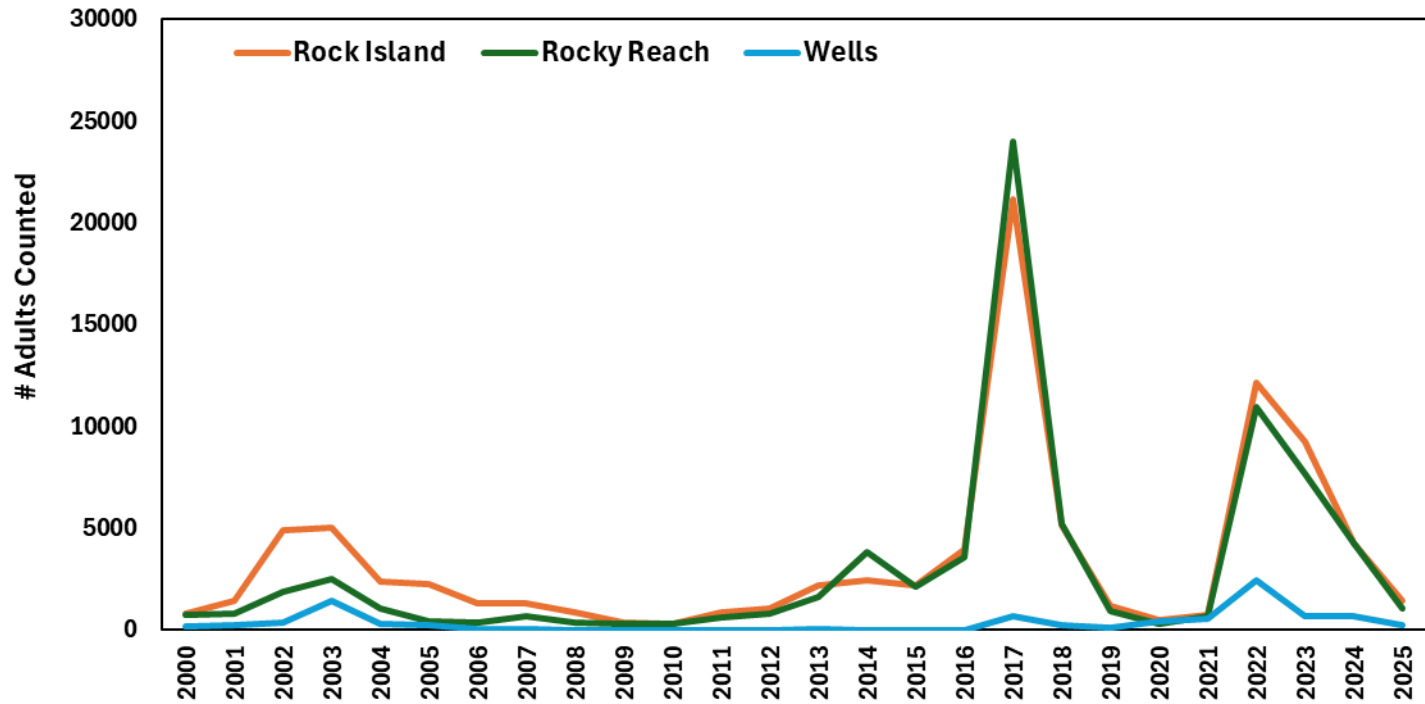


Illustrations by Monica Blanchard

Upper Columbia RMU NatureServe Rankings 2022

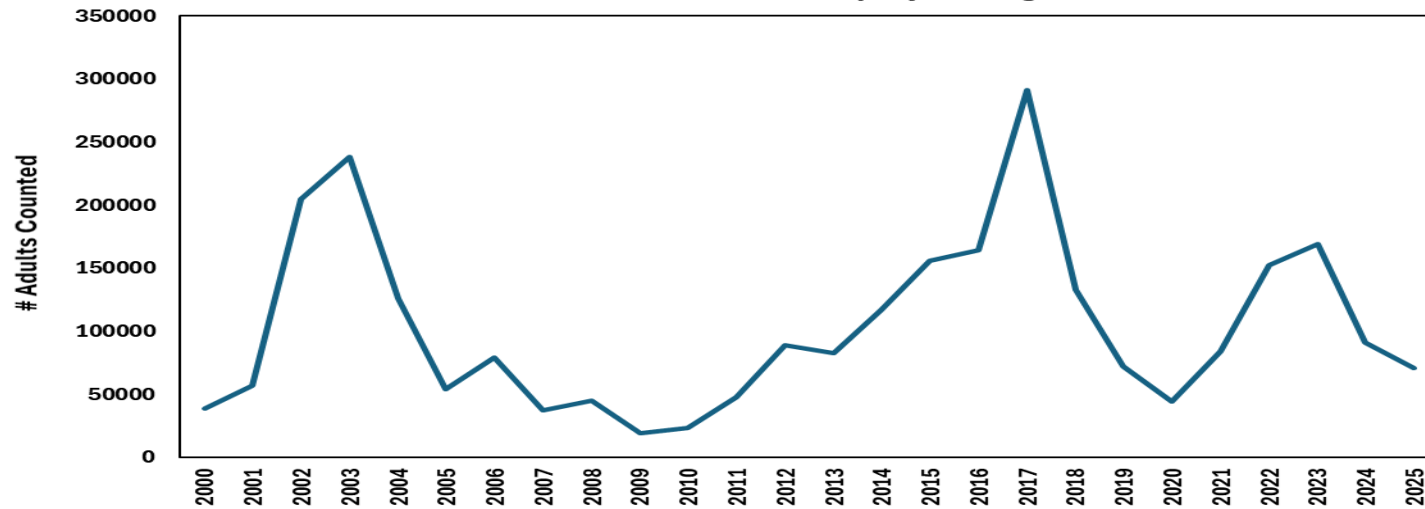


Upper Columbia River Dams - Adult Pacific Lamprey Passage 2000-2025

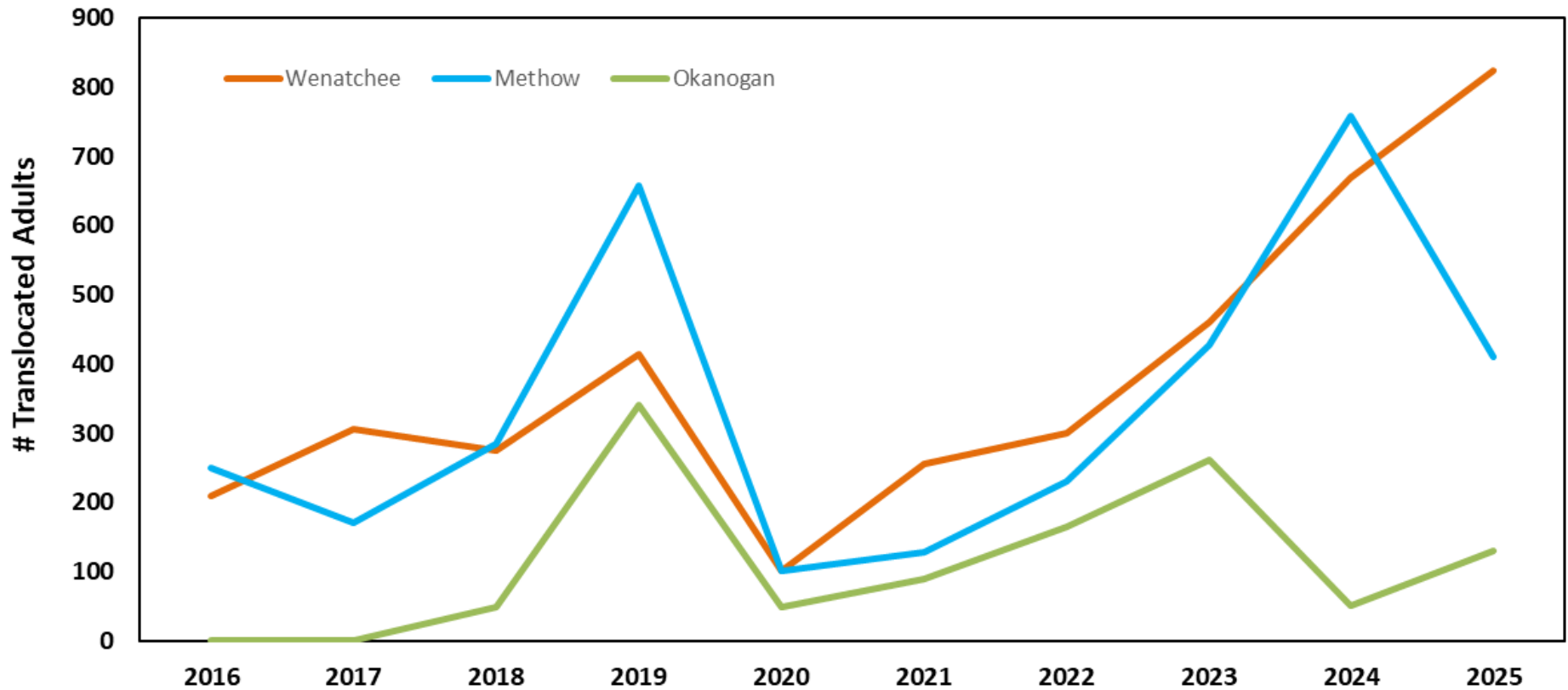


Data Source: Fish Passage Center

Bonneville Dam - Adult Pacific Lamprey Passage 2000-2025



Translocated Adult Pacific Lamprey - Upper Columbia 2015-2025



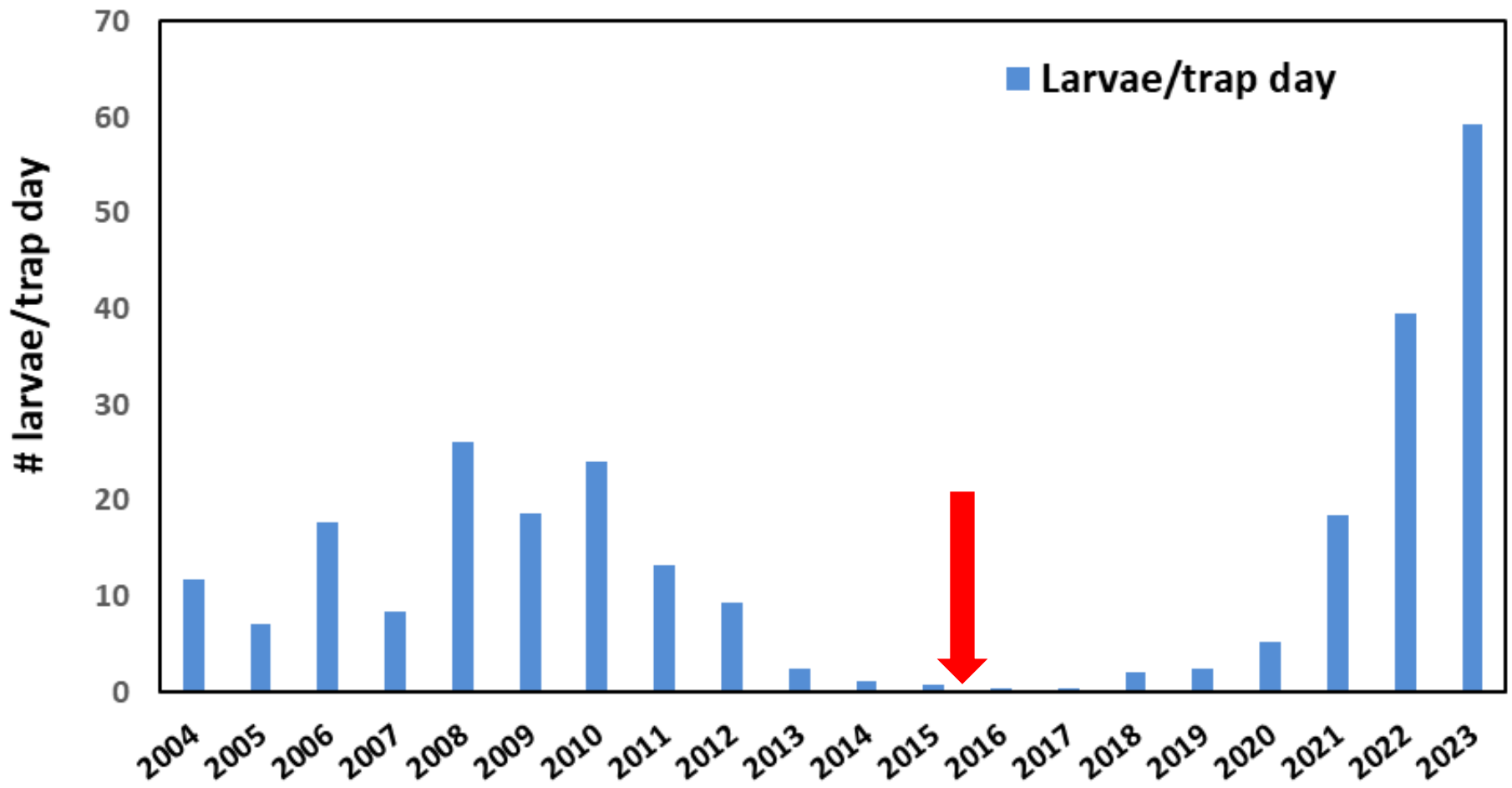
~8,300 translocated adults since 2015



**Welcome Back to the
Okanogan**

**Omak Creek
Loup Loup Creek
Salmon Creek
Similkameen River**

Catch of larval Pacific Lamprey, Methow River, 2004-2023



Data Source: WDFW

Limiting Factors for Pacific Lamprey in the Upper Columbia

1. Low adult abundance
2. Dewatering/Flow management
3. Habitat degradation
4. Instream passage
5. Poor water quality



Ditches, Screens, Dewatering





J. Skalicky

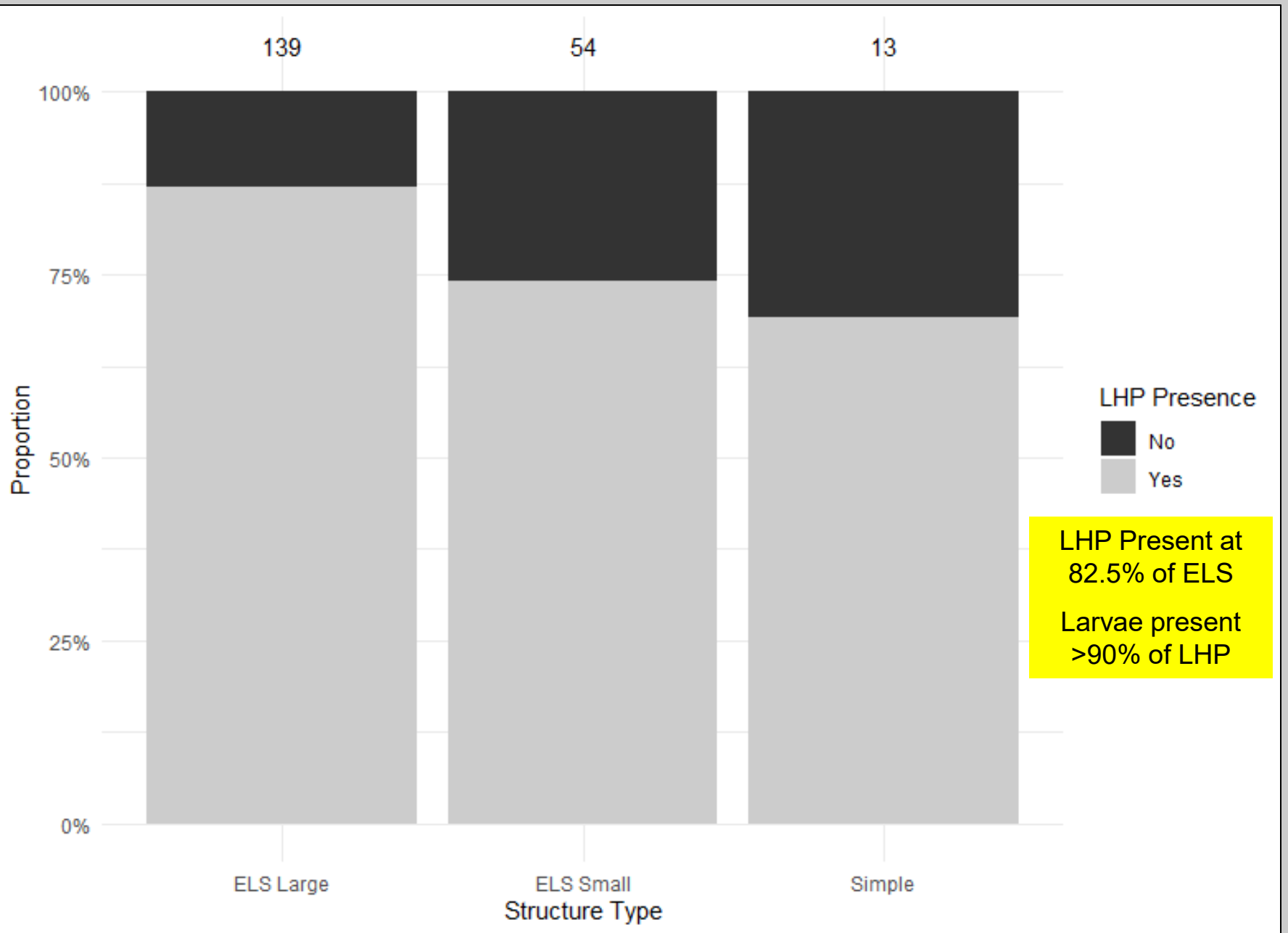


5 1:35 PM



Habitat Restoration





**Larval Habitat Patch presence at ELS structure types, Entiat and Methow River subbasins, 2021-2022.
Sample size (n) presented on top of column.**

Remember Lampreys!!!

Plan for and employ best management practices







Lamprey Passage Structures (LPS)

They Work!!







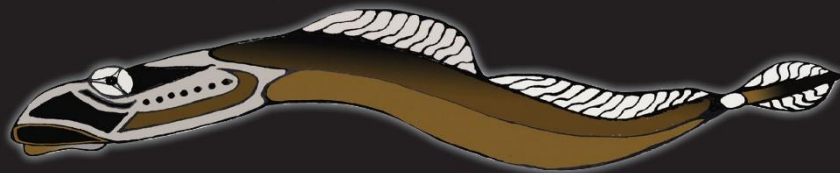
Pacific Lamprey Habitat Restoration Guide

www.methowsalmon.org

www.pacificlamprey.org



Respect Your Elders



Protect Native Lampreys

www.methowsalmon.org