

Ecology's evolving role in supporting local map updates and project permitting

Vision: Ecology can play a larger role in supporting local jurisdictions navigate complex mapping procedures and permitting systems.

Plan: Two-part plan to build Ecology's technical expertise and capacity over the coming 3+ years.

Objectives are twofold –

- 1) Increase the pace and scale of county-wide/watershed-wide map updates statewide.**
- 2) Help fill local capacity gaps to support the C/LOMR process for floodplain restoration projects.**

The Plan

Part I – Cooperative Technical Partnership (CTP) to develop mapping expertise and demonstrate engineering capacity (✓)

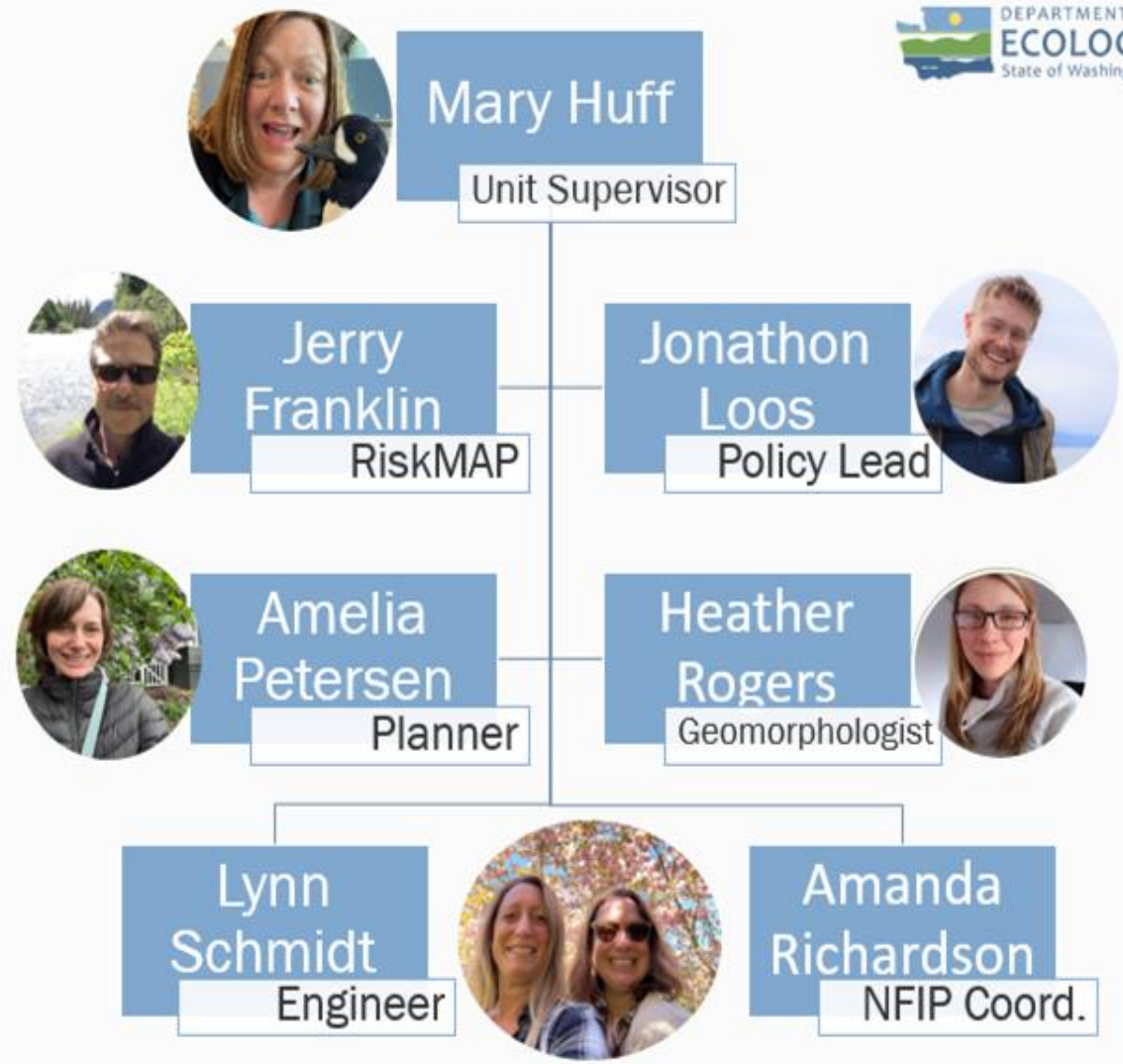
- Funds from FEMA Region 10 (*Thank you, Wendy and team!*)
- Period of performance: October 2024 – September 2026
- ECY Flood Engineer will train with FEMA MT2 team and work with local jurisdictions to complete flood map projects.
- Meanwhile: Seeking fed/state funding for two additional flood engineers

Part II – Apply for national LOMR Partner CTP to take on responsibilities for reviewing C/LOMR applications within WA

- If funding AND application is prepared, apply in Fall 2026.

HQ Team

Floodplain
management
Unit



Regional Specialists

